

# SERIES HR26

**Dynapar™ brand**

## Integral Coupling Encoder

### Key Features

- Unbreakable Code Disc with Rugged Dual Row Bearings
- Integral Coupling and Flange Provide Thermal and Electrical Isolation
- Field Replaceable Coupling

IND  
Industrial Duty



## SPECIFICATIONS

### STANDARD OPERATING CHARACTERISTICS

**Code:** Incremental, Optical  
**Resolution:** 1 to 1024 PPR (pulses/revolution)  
**Accuracy:** (worst case any edge to any other edge)  $\pm 7.5$  arc-min.  
**Format:** Two channel quadrature (AB) with optional Index (Z) and complementary outputs  
**Phase Sense:** A leads B for CW or CCW shaft rotation as viewed from the shaft end of the encoder; see Ordering Information  
**Quadrature Phasing:**  $90^\circ \pm 22.5^\circ$  electrical  
**Symmetry:**  $180^\circ \pm 18^\circ$  electrical  
**Index:**  $180^\circ \pm 18^\circ$  electrical (gated with B low)  
**Waveforms:** Squarewave with rise and fall times less than 1 microsecond into a load capacitance of 1000 pf

### ELECTRICAL

**Input Power:** 5 to 26 VDC at 80 mA max., not including output loads  
**Outputs:**  
 7273 Open Collector: 40mA, sink max  
 7272 Push-Pull: 40mA, sink or source  
 7272 Differential Line Driver: 40 mA, sink or source  
 4469 Differential Line Driver: 100mA, sink or source  
**Frequency Response:** 100 kHz min. (index 75kHz min. for extended temperature range)  
**Noise Immunity:** Tested to EN61326-1  
**Electrical Immunity:** Reverse polarity and short circuit protected  
**Termination:** MS Connector, M12 Connector, Cable Exit  
**Mating Connector:**  
 7 pin, style MS3106A-16S-1S (MCN-N5)  
 10 pin, style MS3106A-18-1S (MCN-N6)  
 10 pin, NEMA4 style (MCN-N6N4)  
 Cable w/ 5 pin M12 Connector (112859-XXXX)  
 Cable w/ 8 pin M12 Connector (112860-XXXX)

### MECHANICAL

**Shaft Coupling:** accepts 1/4", 3/8" and 1/2" motor or machinery shafts  
**Shafts Alignment:** 0.002" max. TIR runout; 0.005" max. radial offset; 3° max. angular  
**Mating Shaft Lengths:** Typically: 0.5" max. available into the coupling as measured from the A/B mounting surface. 1.3" max available into the coupling as measured from the C mounting surface.  
**Shaft Speed:** 10,000 RPM max.  
**Starting Torque:** (max at 25 °C) 1.0 oz-in  
**Moment of Inertia:**  $4.3 \times 10^{-4}$  oz-in-sec<sup>2</sup>  
**Housing and Cover:** Aluminum  
**Shaft Material:** Stainless Steel  
**Disc Material:** Mylar  
**Weight:** 1.5 lbs

### ENVIRONMENTAL

**Operating Temperature:**  
**Standard:** 0 to +70 °C;  
**Extended:** 0 to +85 °C (consult factory for low temperature operation to -40 °C)  
**Storage Temperature:** -40 to +90 °C  
**Shock:** 50 G's for 11 milliseconds duration  
**Vibration:** 5 to 2000 Hz at 20 G's  
**Humidity:** Up to 98% without condensation  
**Enclosure Rating:** NEMA12/IP54 (dirt tight, splashproof)

**Ordering Information**

To order, complete the model number with code numbers from the table below:

Code 1: Model	Code 2: PPR	Code 3: Mechanical	Code 4: Output	Code 5: Electrical	Code 6: Termination	Code 7: Options
<b>HR526</b>	<input type="checkbox"/> <input type="checkbox"/> <input type="checkbox"/> <input type="checkbox"/>	<input type="checkbox"/>	<input type="checkbox"/>	<input type="checkbox"/>	<input type="checkbox"/>	<input type="checkbox"/> <input type="checkbox"/>

**Ordering Information**

<b>HR526</b> Size 25 with Integral Coupling and Flange Adapter	<b>0001 0250</b> <b>0010 0300</b> <b>0012 0360</b> <b>0050 0400</b> <b>0060 0500</b> <b>0086 0600</b> <b>0100 0800</b> <b>0120 1000</b> <b>0200 1024</b> <b>0240</b>	<b>A</b> Flange Adapter with Pilot <b>B</b> Flange Adapter without Pilot <b>C</b> Flange Adapter for NEMA Size 42 Motors	<b>7 Pin Connector or Cable</b> <b>0</b> Single Ended, no Index, Format A, Table 1 <b>1</b> Single Ended, with Index, Format A, Table 1 <b>4</b> Single Ended, with Index, Format B, Table 1 <b>A</b> Single Ended, with Index, Format C, Table 1 <b>C</b> Single Ended, no Index, Format C, Table 1 <b>G</b> Single Ended, with Index, Format D, Table 1	<b>0</b> 5-26V in; 5-26V Open Collector with 2.2kΩ Pullup out <b>1</b> 5-26V in; 5-26V Open Collector out <b>2</b> 5-26V in; 5V Totem Pole out <b>3</b> 5-26V in; 5V Differential Line Driver out (7272) <b>4</b> 5-26V in; 5-26V Differential Line Driver out (7272) <b>5</b> 5-26V in, 5V Differential Line Driver out (4469) <b>6</b> 5-15V in, 5-15V Differential Line Driver out (4469)	<b>0</b> End Mount Connector <b>1</b> Side Mount Connector <b>2</b> 18" Cable, Side <b>3</b> 3' Cable, Side <b>4</b> 6' Cable, Side <b>5</b> 10' Cable, Side <b>6</b> 15' Cable, Side	Available when Code 4 is 0 thru G, and Code 6 is 0 or 1:  <b>PS</b> LED Output Indicator
			<b>10 Pin Connector or Cable</b> <b>2</b> Differential, no Index, Format A, Table 2 <b>3</b> Differential, with Index, Format A, Table 2 <b>5</b> Differential, with Index, Format B, Table 2 <b>B</b> Differential, with Index Format C, Table 2 <b>D</b> Differential, no Index, Format C, Table 2			
			<b>5 Pin M12 Connector</b> <b>H</b> Single ended, no index, Format A, Table 4 <b>J</b> Single ended, with index, Format A, Table 4 <b>K</b> Single ended, with index, Format B, Table 4 <b>L</b> Single ended, with index, Format C, Table 4 <b>M</b> Single ended, no index, Format C, Table 4 <b>N</b> Single ended, with index, Format D, Table 4			
			<b>8 Pin M12 Connector</b> <b>P</b> Single ended, no index, Format A, Table 5 <b>Q</b> Single ended, with index, Format A, Table 5 <b>R</b> Single ended, with index, Format B, Table 5 <b>S</b> Single ended, with index, Format C, Table 5 <b>T</b> Single ended, no index, Format C, Table 5 <b>U</b> Single ended, with index, Format D, Table 5 <b>V</b> Differential, no index, Format A, Table 6 <b>W</b> Differential, with index, Format A, Table 6 <b>X</b> Differential, with index, Format B, Table 6 <b>Y</b> Differential, with index, Format C, Table 6 <b>Z</b> Differential, no index, Format C, Table 6			
			<b>A</b> Same as "0" with extend. temp range <b>B</b> Same as "1" with extend. temp range <b>C</b> Same as "2" with extend. temp range <b>D</b> Same as "3" with extend. temp range <b>E</b> Same as "4" with extend. temp range			

**Cable Assemblies with MS Connector\***

- 1400431XXXX** 7 Pin MS, Cable Assy. For Use with Single Ended w/Index Outputs
- 1400635XXXX** 10 Pin MS, Cable Assy. For Use with Differential Line Driver with Index Outputs
- 109209-XXXX** NEMA4 10 pin MS, Cable Assy. For Use with Differential Line Driver with Index Outputs

**Cable Assemblies with M12 Connector\***

- 112859-XXXX** 5 Pin M12, Cable Assy. For Use with Single Ended Outputs
- 112860-XXXX** 8 Pin M12, Cable Assy. For Use with Single Ended Outputs
- 112860-XXXX** 8 Pin M12, Cable Assy. For Use with Differential Line Driver Outputs

**Mating Connectors (no cable)**

- MCN-N5** 7 pin, style MS3106A-16S-1S
- MCN-N6** 10 pin, style MS3106A-18-1S
- MCN-N6N4** 10 pin, NEMA4 style

**Flexible Couplings**

- CPLX1250375** Flexible Coupling 3/8"; 1/4", 3/8", 1/2"

\*Note: Standard cable length is 10 feet but may be ordered in any length in 5 foot increments. For example, for a 20 foot cable, replace XXXX with -0020.

# SERIES HR26



## ELECTRICAL CONNECTIONS

### Prewired Cable or Accessory Cables with 7 or 10 Pin MS Connector - when Code 4= 0 to 5, or A, B, C, D or G

Note: Wire color codes are referenced here for models that are specified with pre-wired cable. Connector/cables are described in the Encoder Accessories section of this catalog and color-coding information is provided here for reference.

Table 1 – Single Ended			
Encoder Function	Cable # 1400431XXXX 7 Pin Single Ended w/ Index Outputs		
	Pin	Wire Color Code	Cable Accessory Color Code
Signal A	A	BRN	RED
Signal B	B	ORN	BLUE
Signal Z*	C	YEL	YEL
Power Source	D	RED	WHT
No Connection	E	—	GRN
Common	F	BLK	BLK
Case	G	GRN	SHIELD

Table 2 – Differential			
Encoder Function	**Cable # 109209-XXXX or 1400635XXXX 10 Pin Differential Line Driver w/ Index		
	Pin	Wire Color Code	Cable Accessory Color Code
Signal A	A	BRN	BRN
Signal B	B	ORN	ORG
Signal Z*	C	YEL	YEL
Power Source	D	RED	RED
N/C	E	—	—
Common	F	BLK	BLK
Case	G	GRN	GRN
Signal $\bar{A}$	H	BRN/WHT	BRN/WHT
Signal $\bar{B}$	I	ORN/WHT	ORN/WHT
Signal $\bar{Z}$	J	YEL/WHT	YEL/WHT

### 5 & 8 Pin M12 Accessory Cables - when Code 4= H to Z

Connector pin numbers and cable assembly wire color information is provided here for reference.

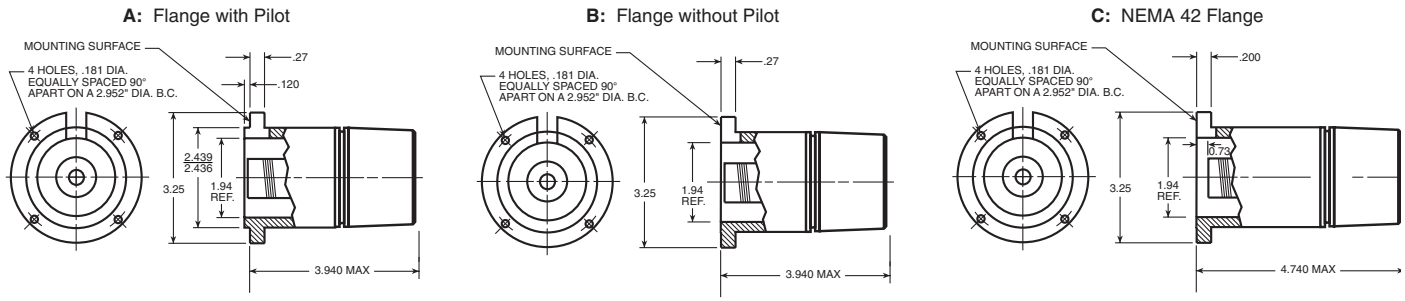
Encoder Function	Table 4		Table 5		Table 6	
	Cable # 112859-XXXX 5 Pin Single Ended		Cable # 112860-XXXX 8 Pin Single Ended		Cable # 112860-XXXX 8 Pin Differential	
	Pin	Wire Color Code	Pin	Wire Color Code	Pin	Wire Color Code
Signal A	4	BLK	1	BRN	1	BRN
Signal B	2	WHT	4	ORG	4	ORG
Signal Z*	5	GRY	6	YEL	6	YEL
Power +V	1	BRN BLU	2	RED	2	RED
Com	3	—	7	BLK	7	BLK
Signal $\bar{A}$	—	—	—	—	3	BRN/WHT
Signal $\bar{B}$	—	—	—	—	5	ORG/WHT
Signal $\bar{Z}$ *	—	—	—	—	8	YEL/WHT

### NOTES:

- 1) Cable Configuration (**Table 1**): Cable Configuration: PVC jacket, 105°C rated, overall foil shield; 22 AWG conductors, minimum
- 2) Cable Configuration (**Table 2**): PVC jacket, 105 °C rated, overall foil shield; 3 twisted pairs 26 AWG (output signals), plus 2 twisted pairs 24 AWG (input power)
- 3) Cable Configuration (**Tables 4, 5 and 6**): PVC jacket, 105 °C rated, overall foil shield; 24 AWG conductors, minimum
- 4) Standard cable length is 10 feet but may be ordered in any length in 5 foot increments. For example, for a 20 foot cable, replace -XXXX with -0020
- 5) \* Index not provided on all models. See ordering information.
- 6) \*\*For watertight applications, use NEMA4 10 pin cable & connector 109209-XXXX
- 7) "MS" Type mating connectors and pre-build cables are rated NEMA 12
- 8) "M12" Cable assemblies are rated IP67

**DIMENSIONS**

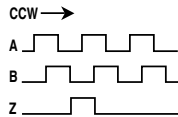
**Code 3: Mechanical**



**Mating shaft lengths:** Typically: 0.5" max. available into the coupling as measured from the A/B mounting surface.  
1.3" max. available into the coupling as measured from the C mounting surface.

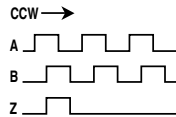
**Code 4: Output**

**0 - 3: Format A**



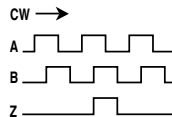
A Leads B CCW  
Index Width (180°) Gated to  $\bar{B}$

**4 - 5: Format B**



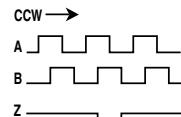
A Leads B CCW  
Index Width (180°) Gated to B

**6 - D: Format C**



A Leads B CW  
Index Width (180°) Gated to B

**G: Format D**

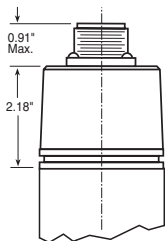


A Leads B CCW  
Inverted Index (180°) Gated to B

**Code 6: Termination**

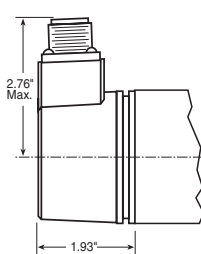
**0: End MS Connector**

When Code 5 is 0 to 5 or A to G

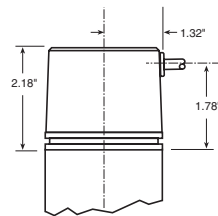


**1: Side MS Connector**

When Code 5 is 0 to 5 or A to G

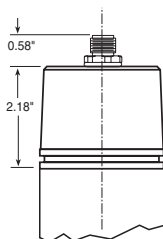


**2 - A: Side Cable**



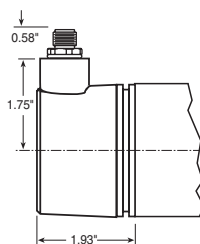
**0: End M12 Connector**

When Code 5 is H to Z



**1: Side M12 Connector**

When Code 5 is H to Z



Worldwide Brands: NorthStar™ • Dynapar™ • Hengstler™ • Harowe™

**DYNAPAR™**  
INNOVATION - CUSTOMIZATION - DELIVERY  
[WWW.DYNAPAR.COM](http://WWW.DYNAPAR.COM)

Headquarters: 1675 Delany Road • Gurnee, IL 60031-1282 • USA

**Customer Service:**  
Tel.: +1.800.873.8731  
Fax: +1.847.662.4150  
custserv@dynapar.com

**Technical Support**  
Tel.: +1.800.234.8731  
Fax: +1.847.662.4150  
northstar.techsupport@dynapar.com

**European Sales Representative**  
Hengstler GmbH  
Uhlandstrasse 49, 78554 Aldingen  
Germany  
[www.hengstler.com](http://www.hengstler.com)