

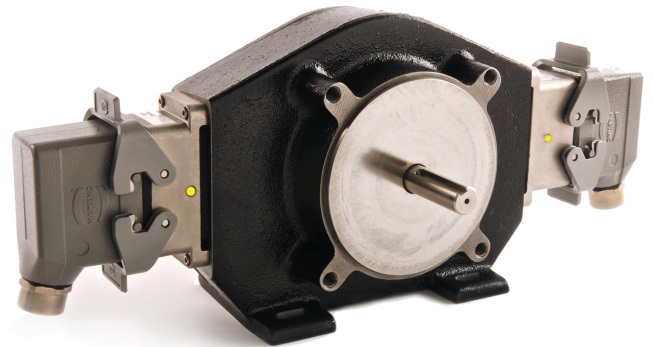
NexGen RIM Tach 6200 NorthStar™ brand

Mill-Duty Encoder

Key Features

- **Stainless Steel and Ductile Cast iron Construction for a Rugged Heavy Duty Encoder**
- **New Sensor Technology provides Extra Wide Gap for even Higher Reliability**
- **Extra Heavy Duty Bearings for Long Life**
- **Convenient LED for Visual indication of Encoder Functionality**
- **Foot-Mount or 56-C Face Mount Ideal for “Flower Pot” or Belt Drive Applications**

NEW For 2011!



SPECIFICATIONS

STANDARD OPERATING CHARACTERISTICS

Code: Incremental
Pulses per Revolution: 60-2048
Phasing Sense: A leads B for Counter-Clockwise rotation (CCW) viewing encoder-mounted end
Quadrature Phasing: 90° ± 45°
Duty Cycle: 50% ± 15%

ELECTRICAL

Input Voltage Requirement: 5-26 Volts DC
Current Requirement: 95 mA typical per sensor module plus line driver load
Output Signals: 5-26 V Line Driver, 150mA source or sink
Frequency Response: 0 - 180kHz Data & Index
Electrical Immunity: 2kV ESD, Reverse Polarity, Short Circuit, Powered Short
Connector: 10 pin industrial duty latching, sealed NEMA 4 & 12, IP65

MECHANICAL

Shaft Speed: 7,000 RPM
Mounting Configuration: 4.5" [115mm] diameter, 56 C motor face or accessory flange to meet NEMA MG1-4 standards; foot mount with 4 slotted bolt holes
Housing Material: Cast Iron/Stainless Steel
Acceleration Rate: 3600 rpm/sec max
Shaft : 0.625" (16mm) diameter with standard key, single or double ended
Shaft Material Options: High Strength Carbon Steel or Stainless steel
Shaft Axial/Radial Loading:
High Strength Steel: 50 lbf axial, 50 lbf radial
Stainless Steel: 35 lbf axial, 35 lbf radial

ENVIRONMENTAL

Operating Temperature Range: -40°C to +100°C
Storage Temperature Range: -40°C to +120°C
Humidity: to 100% RH
Shock (Sensor Module): 1 meter drop test, 30 G's Min
Vibration: 18 G's @ 5-2000 Hz spectrum

ELECTRICAL CONNECTIONS

Signal	Connector Pin	Pigtail Cable	MS 3102E18-IT#
Common	1	Black	A
B	2	Green	E
A	3	Blue	D
Z *	4	Violet	C
No Connection	5	—	—
Vcc	6	Red	B
B	7	Yellow	H
A	8	Gray	G
Z *	9	Orange	I
Shield	10	Braid	J

* Index (Z) optional. See Ordering Information

NorthStar™ brand NexGen RIM Tach 6200

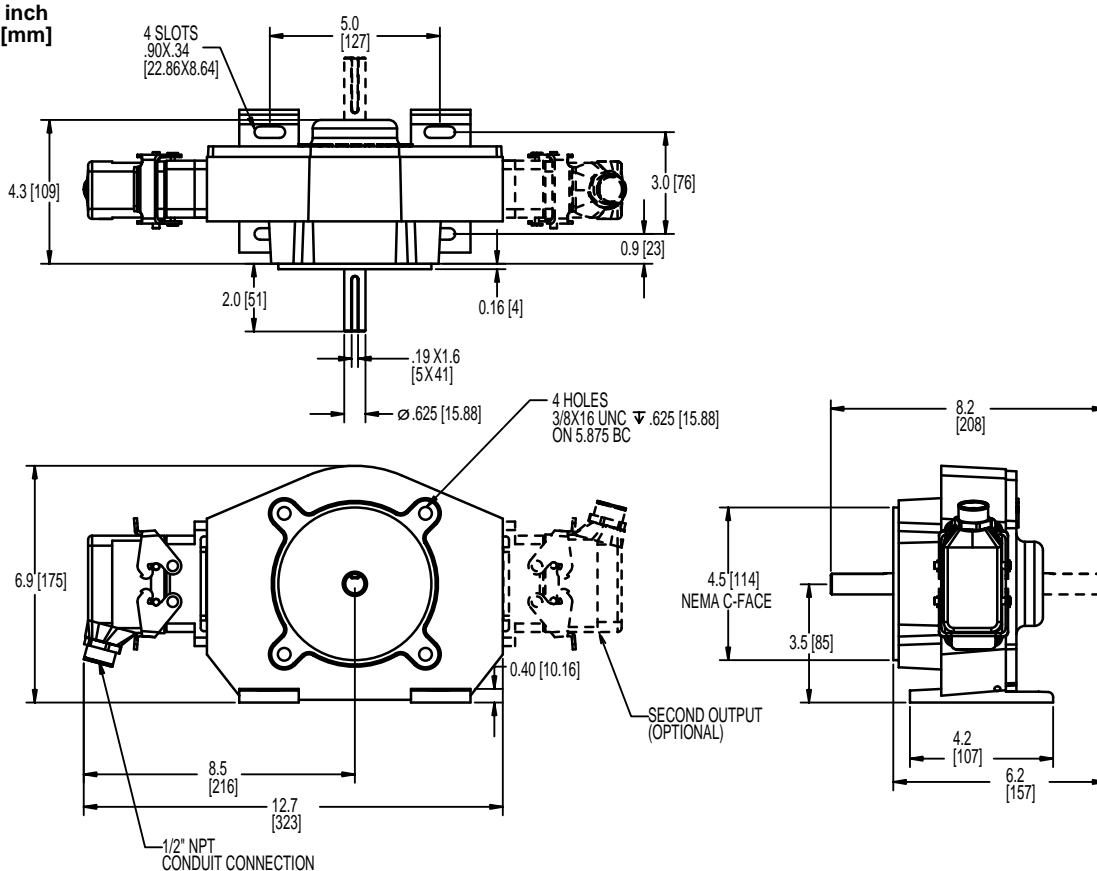
Ordering Information

To order, complete the model number with code numbers from the table below:

Code 1: Model	Code 2: PPR	Code 3: Index	Code 4: Shaft	Code 5: Electrical	Code 6: Termination	Code 7: Options	
RT6	□□□□	□	□□□	□	□	□	
Ordering Information							
RT6 Foot Mount or Close Coupled Housing	0060 0064 0075 0120 0128 0150 0240 0256 0300	0480 0512 0600 0960 1024 1200 1920 2048 2400	L No Index Z With Index Signal Output	A Single Shaft Stainless Steel 5/8" B Dual Shaft Stainless Steel 5/8" S Single Shaft Hi-strength Steel 5/8" D Dual Shaft Hi-Strength Steel 5/8"	1 One sensor module 5-26VDC Line driver output 2 Two sensor modules 5-26VDC Line Driver Output	C Latching Industrial Connector M 10 pin MS Connector P 18" Long Pigtail Cable Q Latching Industrial Connector On 18" Cable	Blank No Option GB Shaft Grounding Brush (Code 4 must be S)

Note: See ACCESSORIES Section For Connectors, Spare Parts and Pulse Wheels

DIMENSIONS inch [mm]



Worldwide Brands: NorthStar™ • Acuro™ • Dynapar™ • Hengstler™ • Harowe™

DYNAPAR
INNOVATION - CUSTOMIZATION - DELIVERY
WWW.DYNAPAR.COM

Headquarters: 1675 Delany Road • Gurnee, IL 60031-1282 • USA

Customer Service:
Tel.: +1.800.873.8731
Fax: +1.847.662.4150
custserv@dynapar.com

Technical Support
Tel.: +1.800.234.8731
Fax: +1.847.662.4150
northstar.techsupport@dynapar.com

European Sales Representative
Hengstler GmbH
Uhlandstrasse 49, 78554 Aldingen
Germany
www.hengstler.com